

KEY MAP
NOT TO SCALE

CASTELLINA

LYING IN SECTION 13, TOWNSHIP 44 SOUTH, RANGE 41 EAST, VILLAGE OF WELLINGTON,
PALM BEACH COUNTY, FLORIDA. BEING A REPLAT OF A PORTION OF LANIER PROPERTY AS
RECORDED IN PLAT BOOK 108, PAGES 75 THROUGH 91, PUBLIC RECORDS OF PALM BEACH
COUNTY, FLORIDA.

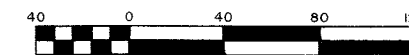
SHEET 12 OF 17

FEBRUARY, 2012

38

COUNTY OF PALM BEACH)
STATE OF FLORIDA) SS
THIS PLAT WAS FILED FOR RECORD
AT _____ M. THIS _____
DAY OF _____ 2012, AND
DULY RECORDED IN PLAT BOOK NO.
_____ ON PAGE _____ THRU

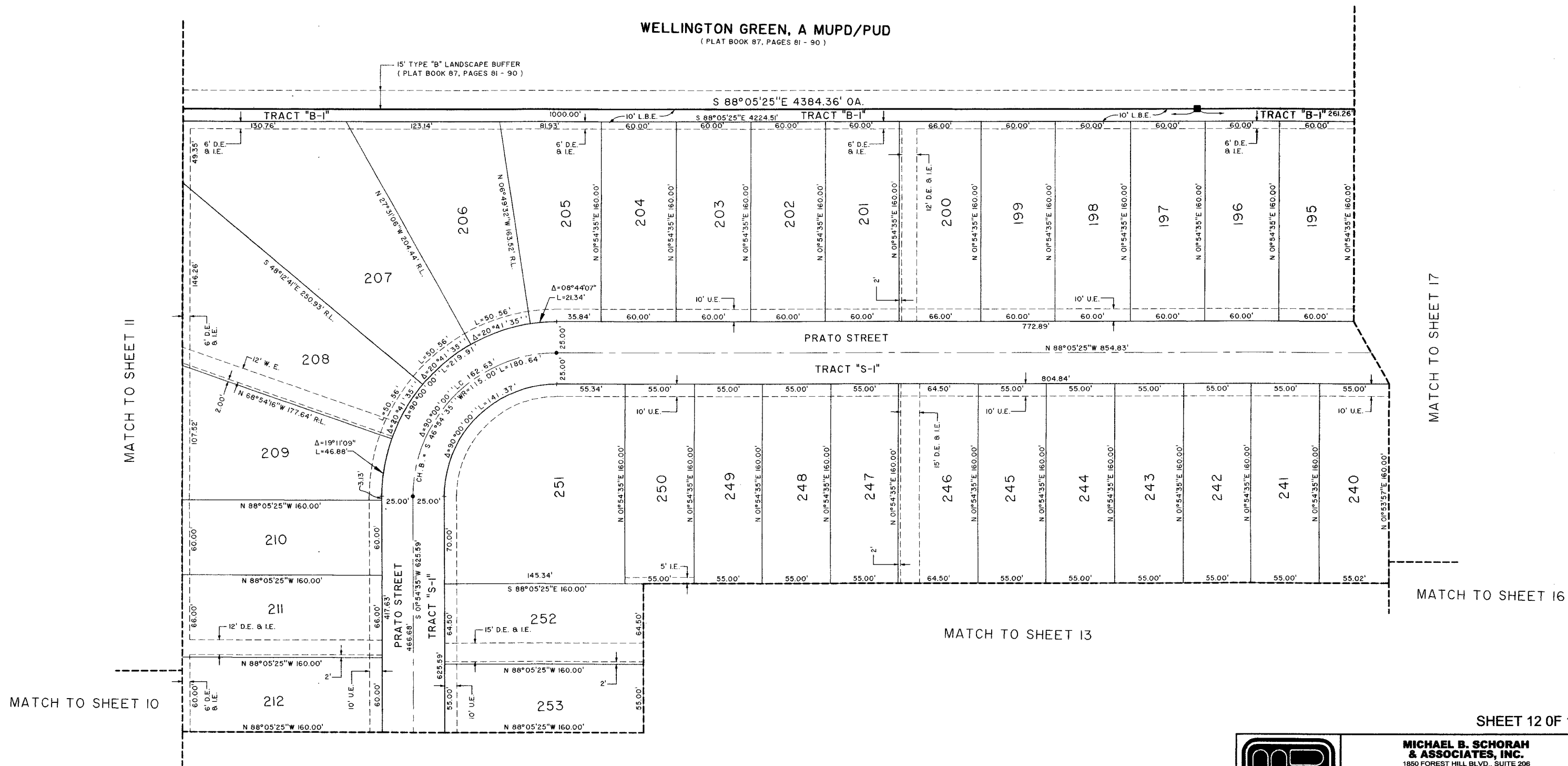
SHARON R. BOCK,
CLERK AND COMPTROLLER
BY: _____, D.C.



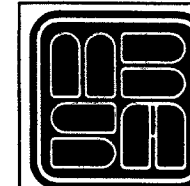
Scale 1" = 40'

WELLINGTON GREEN, A MUPD/PUD

(PLAT BOOK 87, PAGES 81 - 90)



SHEET 12 OF 17



MICHAEL B. SCHORAH & ASSOCIATES, INC.
1850 FOREST HILL BLVD., SUITE 206
WEST PALM BEACH, FLORIDA 33406
E# 2438 TEL. (561) 968-0080 FAX. (561) 642-9726 L# 2438

CASTELLINA